

بِسْمِ اللَّهِ الرَّحْمَنِ الرَّحِيمِ



Monsoon Contingency Plan 2018 State of Preparedness

**State Disaster Management Authority
Government of AJ&K**

Basic Statistics

- **Area** **5,134 Square Miles**
(13,297 square Km)
- **Population** **4.3 millions**
- **Mean Annual Rain Fall** **800-1600 mm**
- **Elevation from Sea Level** **360-6325 m**

Neelum
Muzaffarabad
Hattian

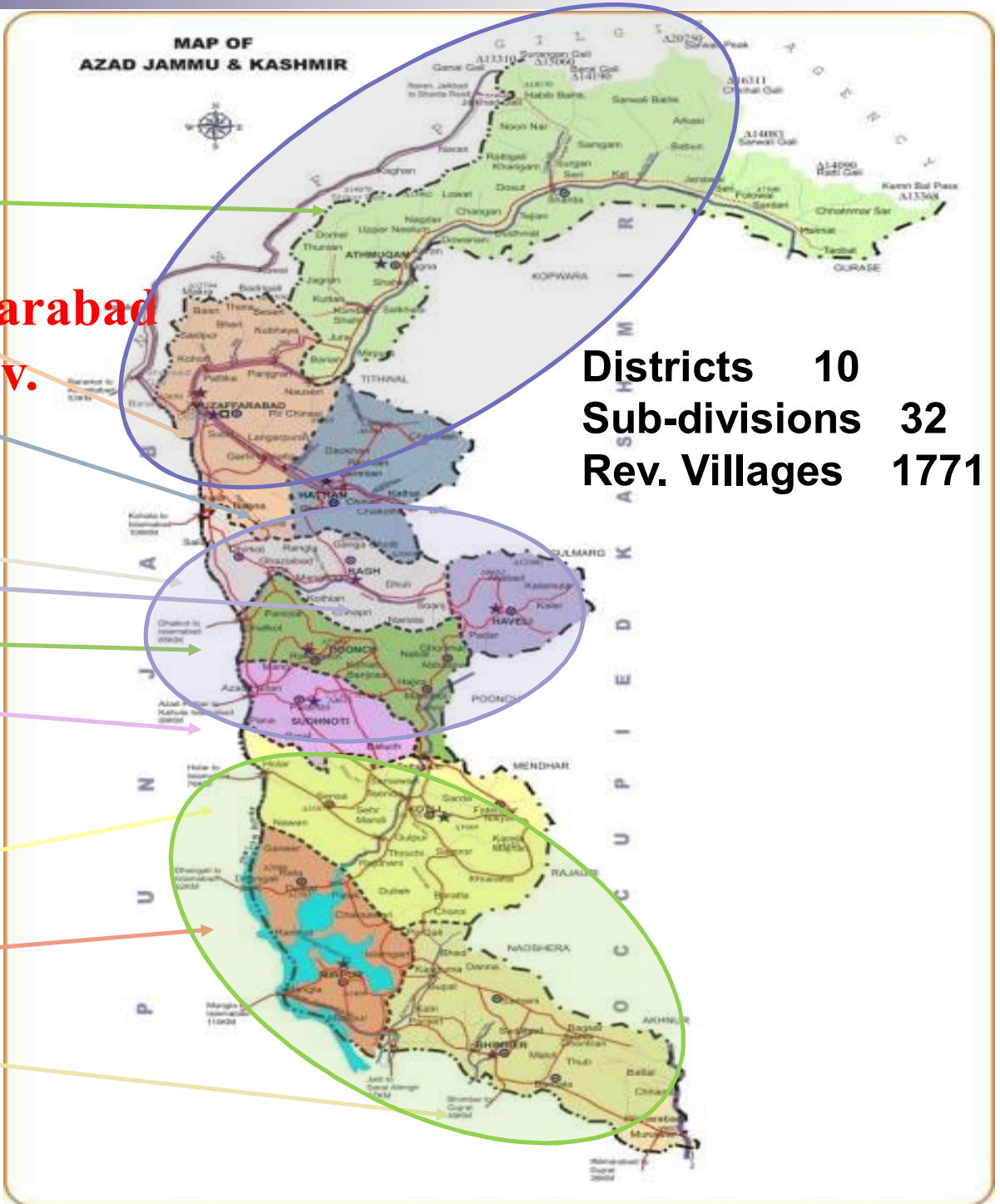
**Muzaffarabad
Div.**

Bagh
Haveli
Poonch
Sudhnoti

**Poonch
Div**

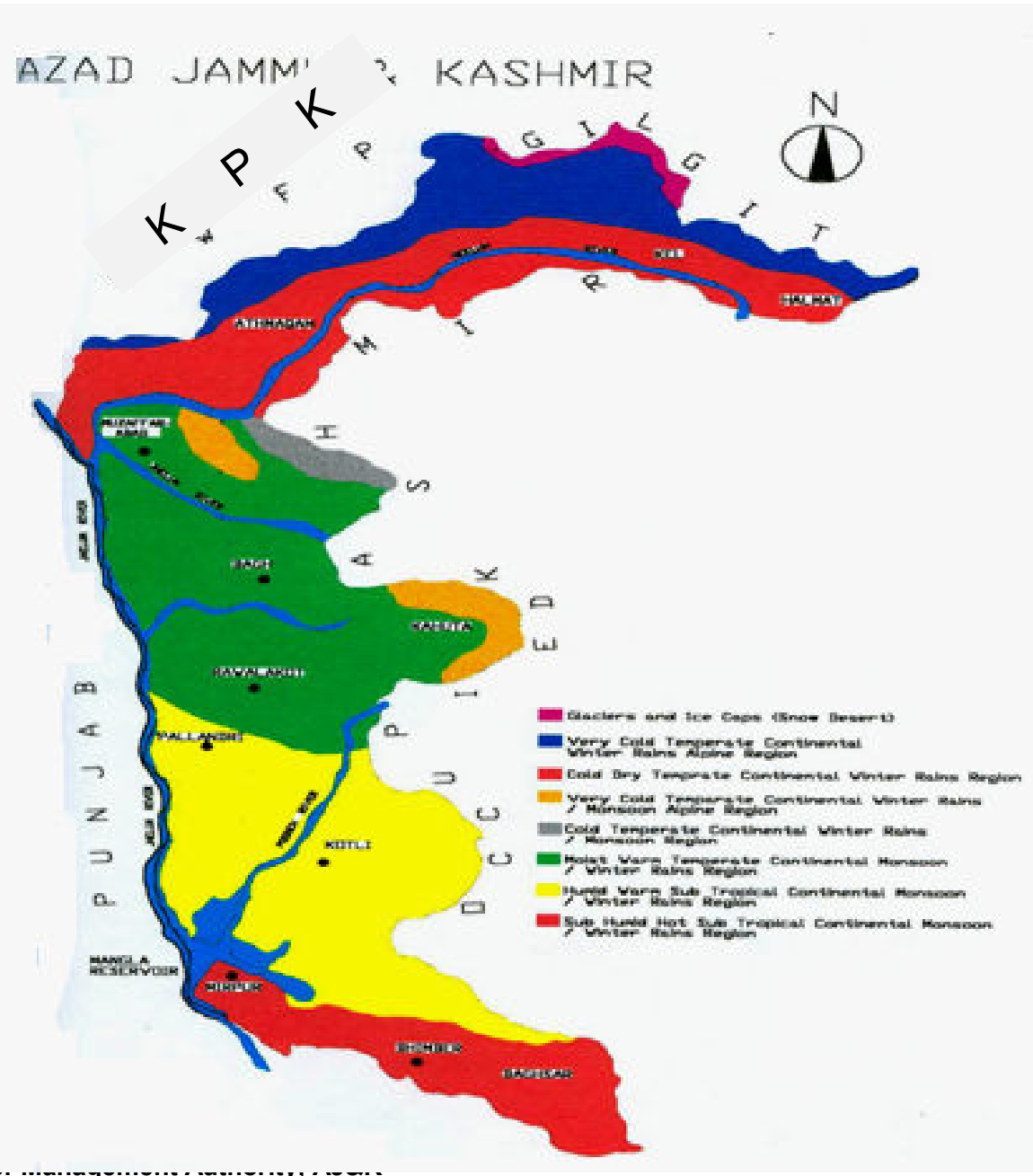
Kotli
Mirpur
Bhimber

**Mirpur
Div**



Climatic Zones of Azad Kashmir

1	Glaciers and Ice Caps
2	Very cold temperate non-monsoon alpine zone
3	Cold temperate non-monsoon
4	Very cold temperate monsoon alpine zone
5	Cold temperate monsoon alpine zone
6	Moist warm temperate
7	Humid warm sub-tropical
8	Sub-Humid hot sub-tropical



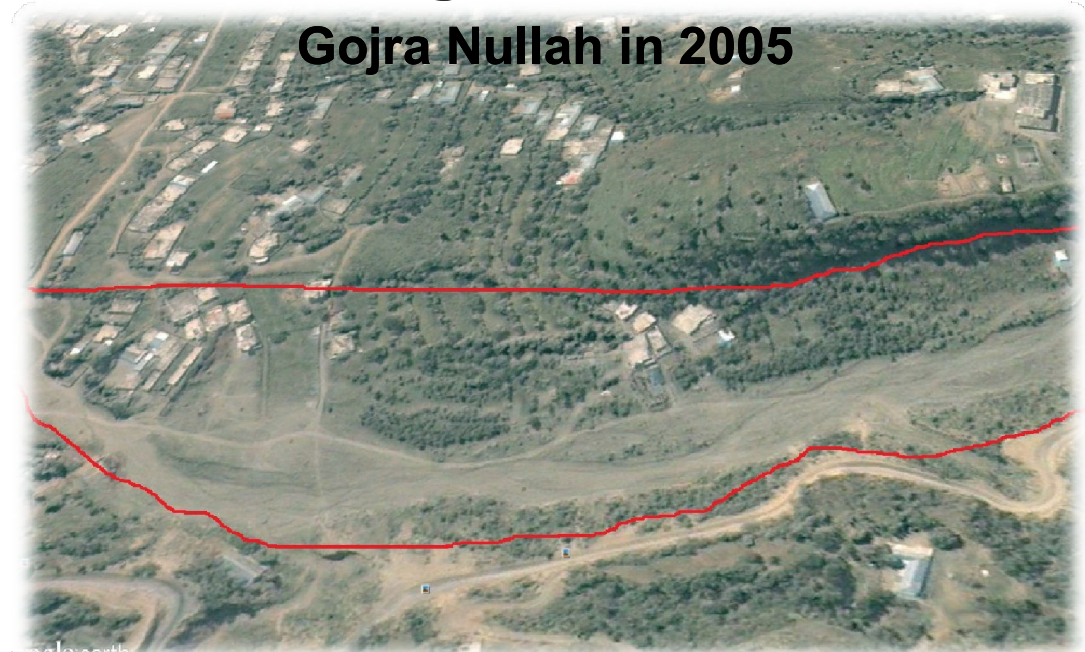
Monsoon Hazards/Threats

- ❑ **Torrential Rains**
- ❑ **Flash Flooding/Floods**
- ❑ **Land Slides/Mud Flows/Avalanches**
- **Consequential Threats**
 - **Human ,Livestock Casualties and Shelter Losses**
 - **Road blockage, Collapse of Communication & electricity network**
 - **Loss of public and private properties**
 - **Population displacement**
 - **Livelihood Destruction and Food Insecurity**
 - **Health Issues**



Monsoon Risk Enhancing Factors

- **Tempering with natural environment**
 - Increased deforestation
 - Sand & stone mining
 - Unplanned construction of roads/cutting of hill slopes
- **Encroachments**
 - Blockade of natural water ways
 - Illegal use of vulnerable/marginal land for habitation
- **Inadequate early warning arrangements**
- **Non observation of early warning by general public**



Monsoon Disaster History

Year	Affected Districts	Persons affected	Deaths	Injured	Houses Destroyed	Socio-Economic Loss
1992	All Districts	125,000	322	1,375	21,920	Infrastructure, livestock, cash crops, orchards. A 1.25 million of population adversely affected
2006	MZD and Bagh	14	27	45	622	Population of 31 villages affected
2010	Neelum, MZD, Hattian, Bagh	14,459	69	79	10,616	Infrastructure, Livestock, Cash Crops, Environmental degradation /losses
2011	Hattian	1,300	-	-	49	Infrastructure damages
2012	All Districts	12942	52	25	2,092	Infrastructure, human and property losses besides environmental degradation
2013	All Districts	1,644	35	15	274	Public & private property losses & environmental degradation
2014	All Districts	91,950	56	87	15,325	41 shops, 82 Water mills, 203 cattle, agricultural & Multi sectoral loses
2015	All Districts	2856	26	05	408	10 Shops, 06 Cattle,
2016	All Districts	9024	31	21	1409	43 shops, 21 Cattle
2017	All Districts	228	13	5	30	Infrastructure damages

Monsoon 2018

Weather Outlook (by PMD)

Northern parts of country, including AJK, rainfall is expected to remain “ Normal to slightly above the normal of long term average” There is high probability of few “ Extreme Rainfall Events” the region during the monsoon season.

SDMA Forecast Conclusion

Weather Outlook (by PMD)

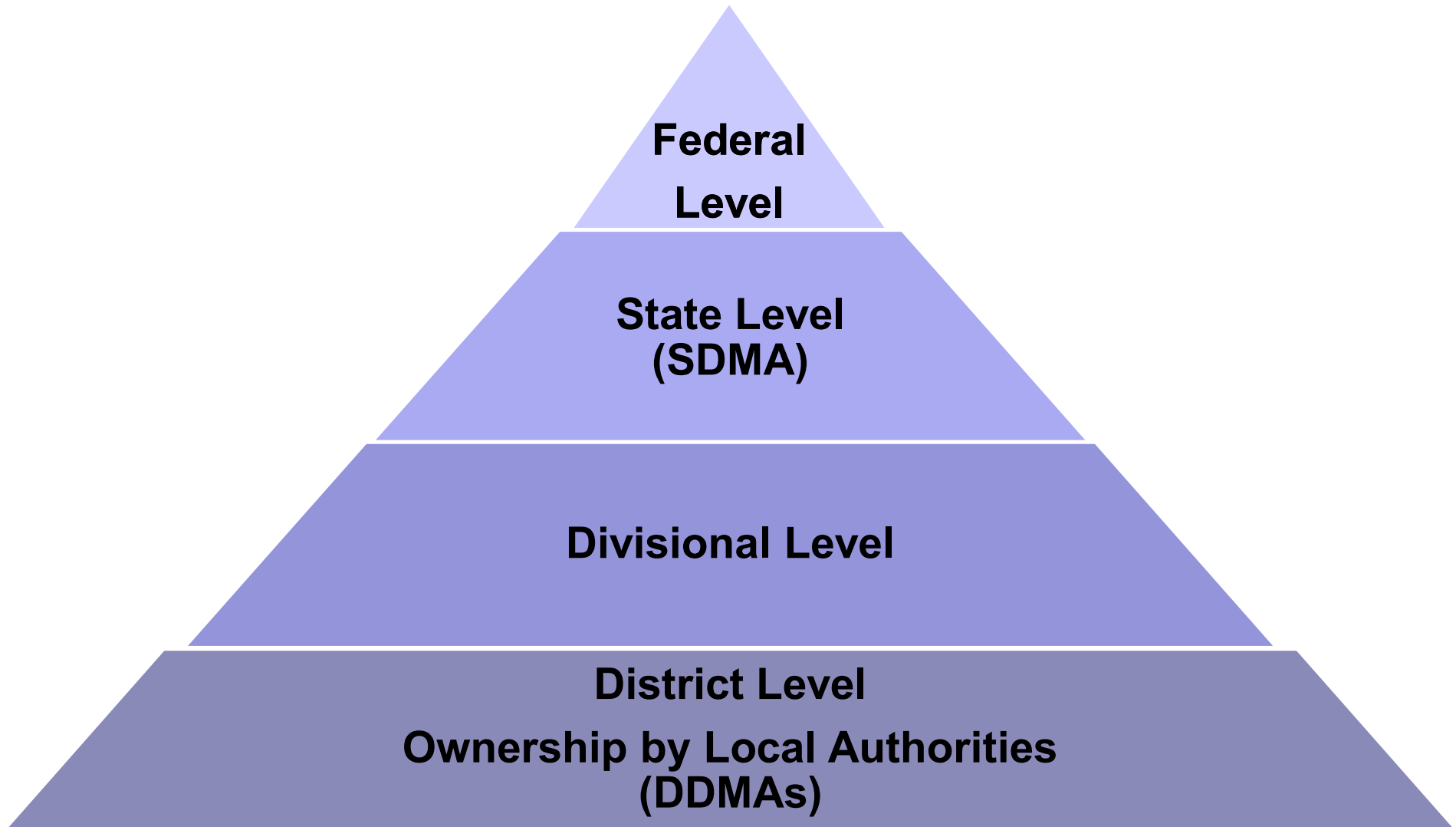
- Due to the observed unpredictability in weather patterns chances of Extreme Rainfall Events, like Cloud Bursts, planning should be undertaken for any eventuality
- Possibility of Flood Water Synchronous Effect of riverine, flash and urban floods in areas vulnerable to all three is an increased and ever present risk of landslides in vulnerable hilly/mountains areas of the country which must be catered for

Early Warning

- SDMA will be the focal agency for issuing of community based SMS alerts
- Community based indigenous early warning system must be institutionalize in areas vulnerable to flash flood, landslides, GLOF, avalanches
- Special vigilance during dark hours and periods of intense rains like watchman, loudspeakers/megaphones, whistles, telephone calls etc

Plan Methodology

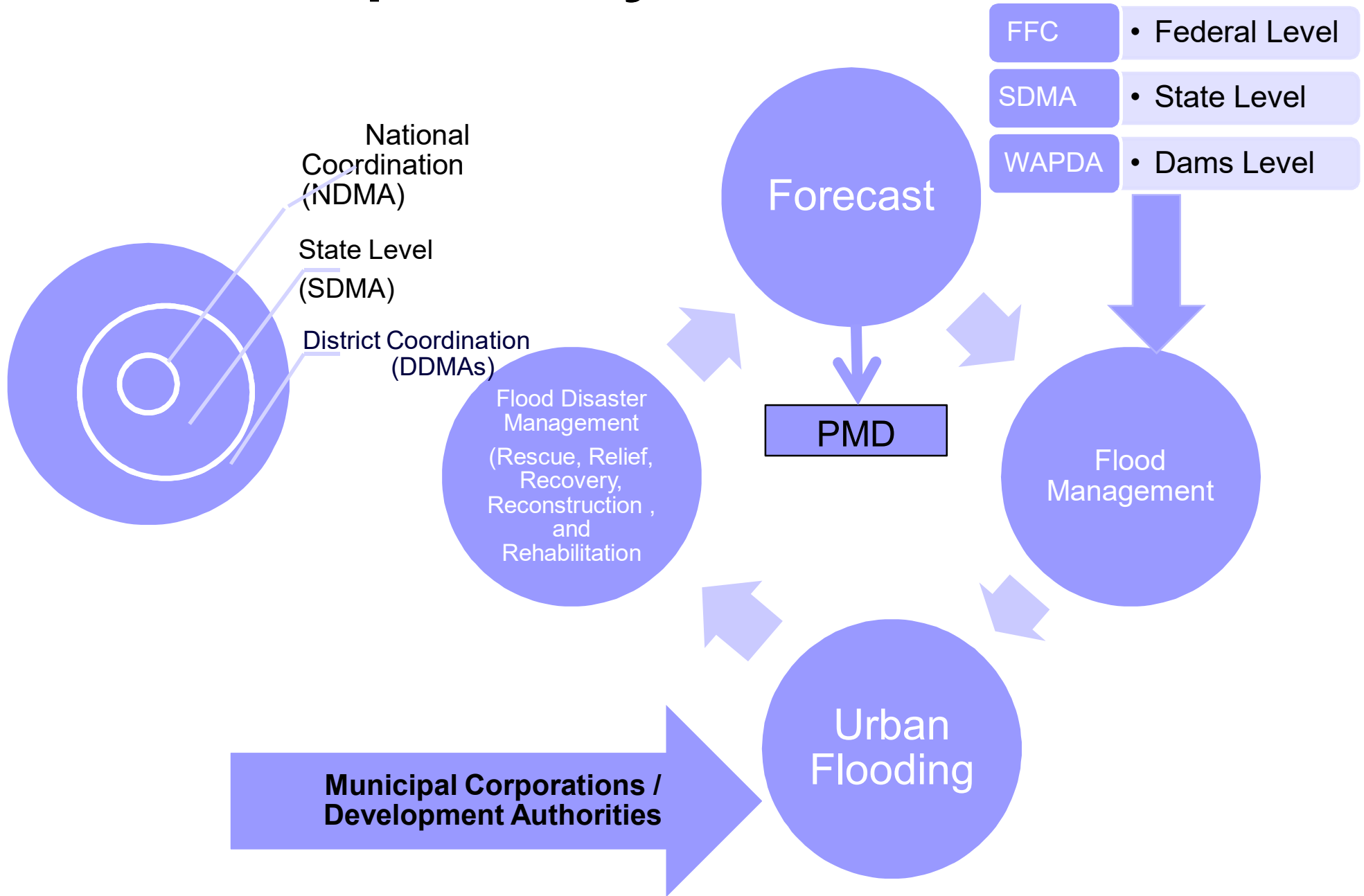
Bottom up Approach



Contingency Planning Process

- Keeping in view the worst case scenario and based on past experience, SDMA chalked out a Monsoon Contingency Plan–2018 in consultation with all DDMA's, line departments and other stakeholders
- Meetings of DDMA's held by Deputy Commissioners to take all departments on board
- District plans are prepared according to the template shared with Deputy Commissioners
- All concerned line departments and stakeholders are taken on-board to cope with any emergency situation in the coming Monsoon season

Responsibility Matrix-Flood DM



Roles and Responsibilities of Stakeholders

SDMA	<ul style="list-style-type: none"> • Coordination with NDMA/Federal Govt. entities and Allied Departments NGOs/INGOs • Provision of Logistic Support to all DDMA s • To ensure follow ups and monitoring of emergency response activities
District Administration / DDMA s	<ul style="list-style-type: none"> • To ensure effective dissemination of Early Warnings, Evacuation of affected/distressed population • Camp Management • Provision of Food & Non Food Items in the camps • Coordination with relevant departments for timely clearing of roads and communication facilities • To ensure provision of essential services including health and relief services
Pakistan Army	<ul style="list-style-type: none"> • To extend support in search & rescue operations • Clearance & Rehabilitation of Road communications when and where ever their support is needed
Health Department	<ul style="list-style-type: none"> • To ensure First Aid, all preventive measures and provision of medicines • Establishment of Medical Camps and provision of Ambulance Service
Civil Defence/ Rescue 1122	<ul style="list-style-type: none"> • Fire Fighting, Search & Rescue operations by utilizing capacity of Municipalities and Development Authorities in case of emergency spill over • Establishment of Flood Emergency Control Cell in respective districts • Keeping the volunteers on alert

Cont.

Roles and Responsibilities of Stakeholders

<ul style="list-style-type: none"> • Police 	<ul style="list-style-type: none"> • Maintenance of Law & Order Situation • To support in Dissemination of Early Warnings by DDMA's • Assist the Search and Rescue operations
<ul style="list-style-type: none"> • C & W 	<ul style="list-style-type: none"> • Clearance & Rehabilitation of Roads & Removal of Debris/Slides
<ul style="list-style-type: none"> • NHA /FWO 	<ul style="list-style-type: none"> • Clearance of slides and Rehabilitation of Road communications under their operation and control
<ul style="list-style-type: none"> • Electricity Department 	<ul style="list-style-type: none"> • Maintenance of power transmission lines to ensure un-interrupted electricity supply
<ul style="list-style-type: none"> • Education Department 	<ul style="list-style-type: none"> • Provision of School Buildings for temporary setting up of IDPs camps
<ul style="list-style-type: none"> • Utility Stores Corporation 	<ul style="list-style-type: none"> • Supply of Food Items at short notice by SDMA
<ul style="list-style-type: none"> • UN/INGOs/NGOs 	<ul style="list-style-type: none"> • To coordinate and provide active support to SDMA for assessment and evacuation of vulnerable families • Provision of Food & NFIs, Tents & Medicines • Provision of WASH & WATSAN Facilities for IDPs • To ensure all types of humanitarian assistance as per mandate and resource availability

Cont.

Roles and Responsibilities of Stakeholders

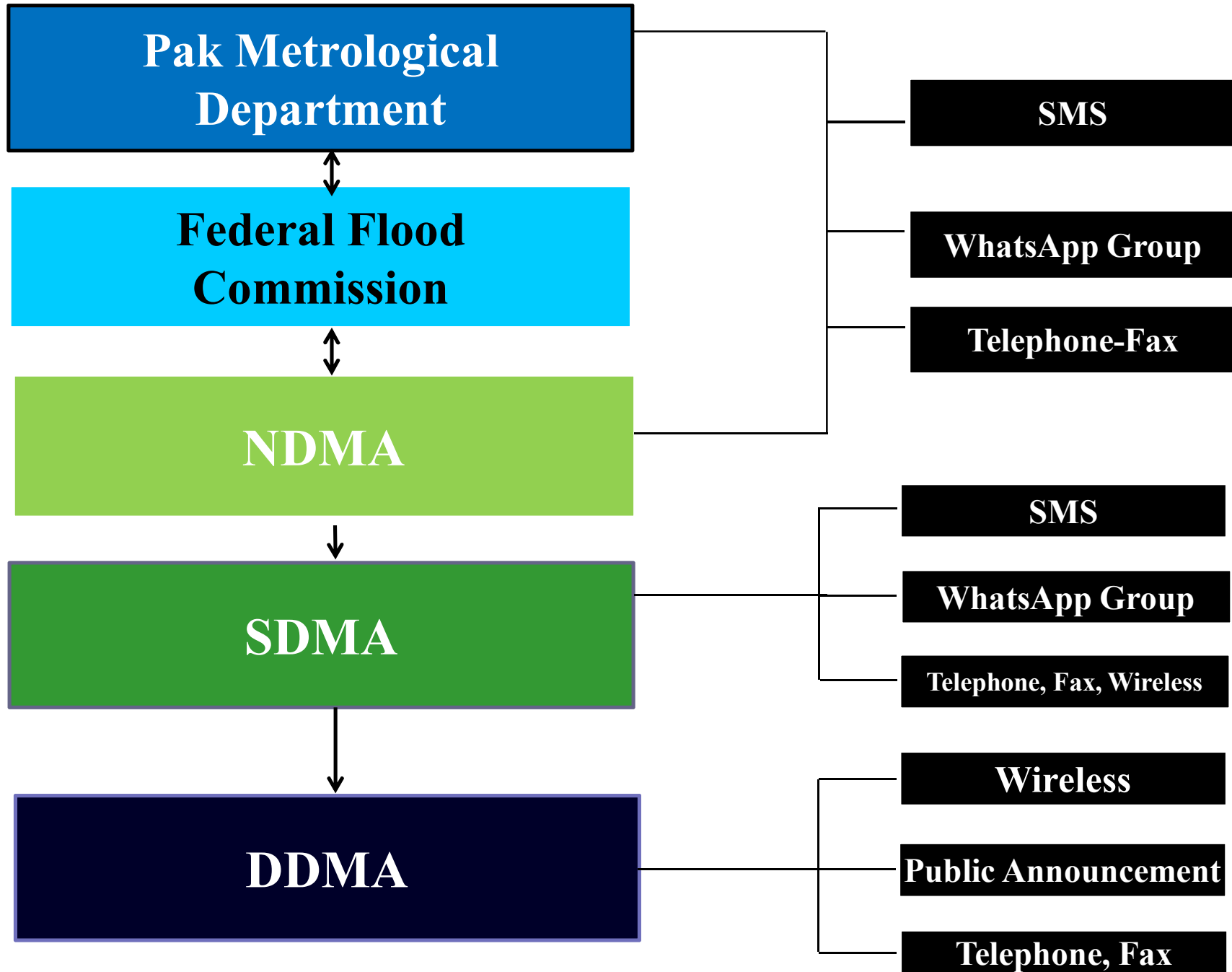
Food Department	<ul style="list-style-type: none"> • Keeping stock of wheat available as per the requirement at various places in the State
Information Department	<ul style="list-style-type: none"> • Broadcast advance warnings to sensitize the public • Guide the public about the nearby safer places, routes and other precautionary measures • Publication of the flood-related reports on daily-basis in the local, regional and national newspapers • Arrange press briefings/press conferences for any officer/official
Local Government & Rural Development Department	<ul style="list-style-type: none"> • Arrange potable drinking water and sanitation facilities for flood affected areas • Arrange for the removal of carcasses and debris after floods • Immediate restoration of water supply, sanitation, cause ways, culverts, links roads, street lights and public latrines • Coordinate with humanitarian agencies i.e, INGOs, NGOs and UN agencies to make up the short falls • Arrange for requisite Water and Sanitation in all the earmarked evacuation centers in coordination with education department
Board of Revenue	<ul style="list-style-type: none"> • Recovery Need Assessment • Damage Need Assessment • Coordination for early recovery & rehabilitation

Response

Coordination and Operation

- **SDMA will play a lead role during monsoon emergency in AJK - focal point for coordination**
- **State level Emergency Operation Center (SEOC) will remain active and operational 07/24 hours for coordination among all the districts**
- **SEOC will keep close contact with Pakistan MET department, NDMA, Pakistan Army, UN agencies, Red Crescent and all other concerned stakeholders**
- **District control rooms have been established by DDMA's and will remain active and operational round the clock**
- **All the departments have their own contingency plans & control rooms**

Early Warning Mechanism



Anticipated Flood Response Measures

- **Rescue Operation** (1122, Police, Army)
- **Re-opening of Road Communication** (Works Dept, Army, NHA)
- **Food Security for affected population** (Food Dept, SDMA)
- **Provision of Health Services** (Health, NGOs)
- **Emergency Response Stockpiling** (NDMA, SDMA, PRCS)
- **IDP Camps and Emergency Shelters** (DDMA, PRCS, NGOs)
- **WASH and WATSAN Facilities in Relief Camps** (Local Govt, NGOs)
- **Food and Non-food items for IDPs** (SDMA, Food Dept, NGOs)

Overall Anticipated Caseload

Sr. No.	District	Anticipated Case Load (Families)	Vulnerable Areas
01	Muzaffarabad	980	Makri, Lower Plate Walkway, Taali Mandi, Shahsultan, Saheli Sarkar Bridge, Gulshan Pir Allodin , Tariqabad, ManakPayeyan
02	Jhelum Valley	1460	Khilana, Gujrabandi, Chakhama , Hattian, Chinari , Chikar, Banna Mula, Lamnia, Salmia, Saina Daman
03	Bhimber	235	Chilihana,Katha Semari, Jura,Sosal Bandi Laswa Sharda, Kharigam,Surgan Bakwali,Gamote,
04	Sudhnuti	255	Harkarian, Bela, Dharian Zeerian, Chak , Potha Bala, Kanoli,Numal, Miana Na Mora,Beroti,Bandi Dhalkot
05	Haveli	1140	Grid Colony Bagh,Refugee Camp, Mang Bajri Village Bees Bagla ,Thub, Village Minhasa , Mala Bagla , Salian Dhondan Dhirkot,Gojar Kohallah
06	Bagh	1500	Chanjal , Bahdi ,Jokan, Quaid-i-Abad, Hillan Kalamulla Khurshidabad,
07	Rawalakot	1127	Pallandri to Trarkhal Road, Pallandri to Rawalpindi Road
08	Neelum	1330	Saim, lehri, Azizpur , Kharikhas,Bega Bilawal, Takipur,Shahpur, Pakhral, Chabriya Dattan, Dhok meri
09	Kotli	545	Bhimber City, Ghura Din, Randyam , Kasghuma, Smahni Choki , Tonin , Barnala, Kadhala , Lakarmandi
10	Mirpur	600	Thalair Colony, Dakhari, Juzwi Mandi, Choch, Holar,Majjan, Jahndroot, Manoli Nala,Nala, Nala Kala Dabb
Total		9172	

Preparedness – Available Stocks with SDMA (NFIs)

Sr. No	Item	Qty
01	Tent	1206
02	Mattresses	Nil
03	Sleeping Bags	1045
04	Plastic Mats (Different Size)	6890
05	Plastics Sheets	230
06	Blanket	1180
07	Jerry Can	Nil
08	Kitchen Sets	Nil
09	Hygiene Kits	Nil
10	Ladies Shawl	1700

Relief Stock Pre-Positioned in Districts

District	Tents	Water Filter	Plastic Sheets	Plastic Mats	Blankets	Shawls
Poonch	32	-	0	15	100	-
Bagh	50	4	50	12	200	75
Bhimber	45	-	400		200	50
Muzaffarabad	44	-	5	-	9	-
Jehlum Valley	40	-	-	-	30	20
Neelum	05	-	10	3		
Sudhnuti	60	-	-	35	80	20
Kotli	300	-	150	-	200	200
Mirpur		-		-		
Haveli	70	-	20	40	50	-

Requirement of NFIs for Anticipated Caseload

District	Tents with P.Sheets	Matris	Plastic Mats	Blanket	Kitchen set	Hygiene Kits
Muzaffarabad	1500	1500	1000	2000	400	500
Jehlum Valley	260	760	500	750	250	250
Neelum	200	400	400	800	200	300
Rawalakot	1127	1127	200	500	300	250
Bagh	1500	1500	1000	2000	1500	1000
Haveli	3000	7000	4000	7000	1800	8000
Sudhnoti	255	150	100	150	50	50
Mirpur	800	1600	700	1600	500	300
Bhimber	150	300	100	400	250	100
Kotli	545	1000	100	200	100	100
Total	9337	15337	8100	15400	5350	10850

Resources with Rescue 1122

Ambulance	Fire Truck	Water Bowser	DR Vehicle	Recovery Vehicle
10	5	1	3	1



Stock Position of Food Department

Name of Station	Wheat Balance (in tons)
Base Godown Islamabad	10787
UK Mills Rawat	335
Mangla Flour Mills Mirpur	1341
Pak Kashmir Flour Mills Dudyal	661
Saddique Flour Mills Jatlan	1182
Total	14306
Neelum Flour Mills Mzd	516
Gillani Flour Mills Kohala	604
Poonch Flour Mills Arja	647
Jadded Flour Mills Gorah	1940
Sadozai F.M.A Patan	1916
Itfaq Flour Mills Sensa	2249
Total	7872
G.Total	22178

Food Items Required

Sr.No	District	Relief Caseload	Food(MTs) for 3 months
1	Muzaffarabad	980	333.39
2	Jhelum Valley	1460	496.69
3	Bhimber	235	79.74
4	Sudhnuti	255	86.75
5	Haveli	1140	387.8
6	Bagh	1500	510.3
7	Rawalakot	1127	383.40
8	Neelum	1330	452.46
9	Kotli	545	185.40
10	Mirpur	600	204.12
Total		9172	3120.05

Details of EOCs Established

Department	Focal Person	Emergency Control Room No
SDMA Muzaffarabad	Moazzam Zafar	05822-921643, 0300-9869094
DDMA Muzaffarabad	Waqas Ali	052822-920055, 0333-9407703
DDMA Neelum	Akhtar Ayoub	05821-920001, 0355-8126666
DDMA Rawalakot	Rubiya Kanwal	05824-920052, 0348-5524670
DDMA Bagh	Waqas Saleem	05823-920046, 0342-8909449
DDMA Haveli	Zaheer Khan	05823-921708, 0333-5506612
DDMA Sudhnoti	Sannia Qamar	05825-920011, 0310-9185530
DDMA Mirpur	Faizan Zafar	05827-921270, 0306-8887080
DDMA Bhimber	Mubashir Mushtaq	05828-920220, 0343-7707523
DDMA Jehlum Valley	Naqash Mushtaq	05822-922607, 0312-9033868
DDMA Kotli	Shariq Talat	05826-920164, 0307-5533133

Gaps/Requirements

- **NHA needs to setup well equipped road clearing units between Kohala to Chakothi and other roads under its operation and control**
- **NDMA is requested to help bridge gaps in terms of NFIs and FIs (if possible) to ensure preparedness for anticipated caseload**
- **NDMA may also extend its support in resource availability to carry out mitigation and response measures for ensuring effective management of hazards and associated threats**



THANK YOU